

On the Road to Zero Waste

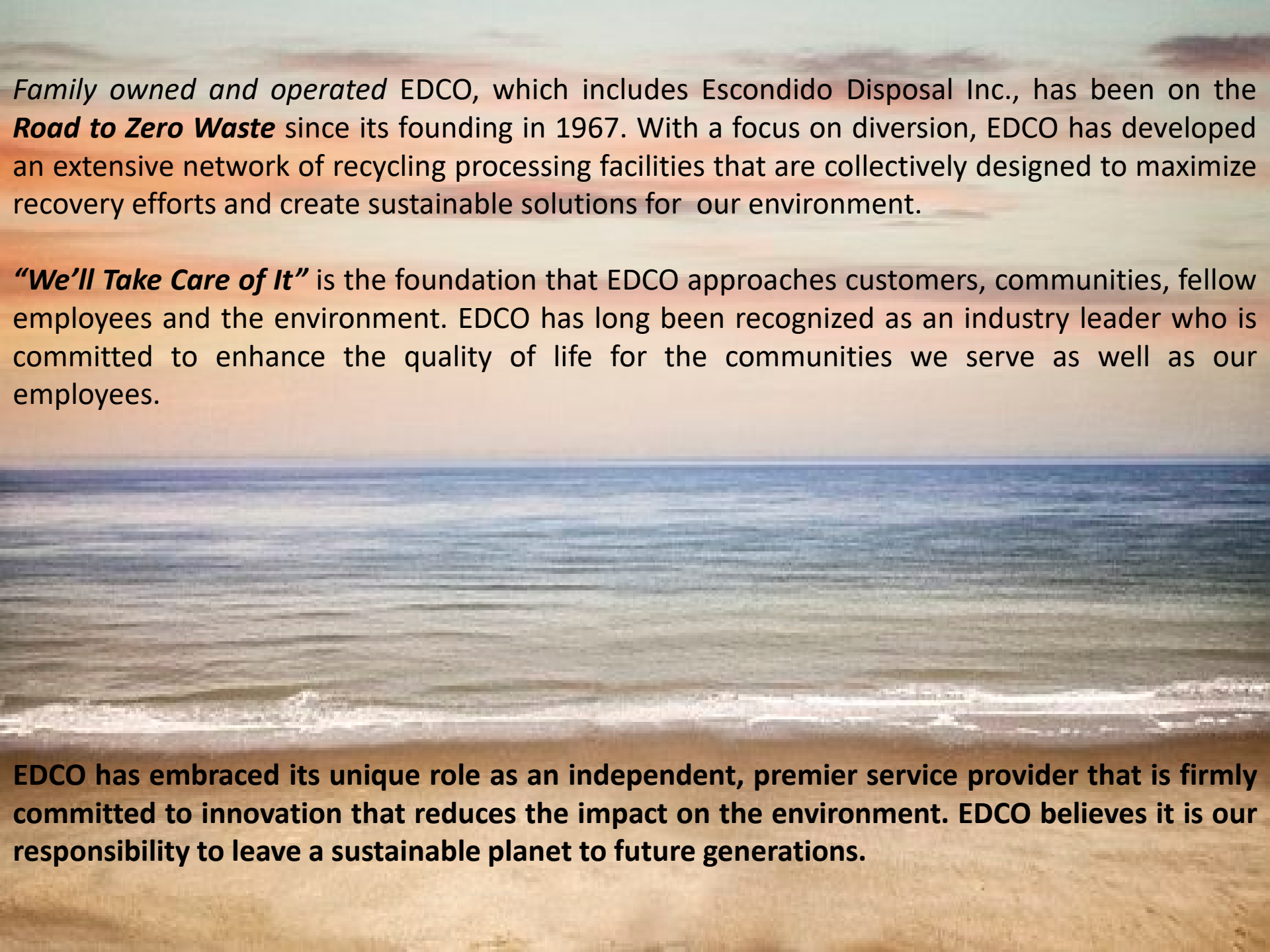
Sustainability Report 2021



EDCO

edcodisposal.com

“We’ll Take Care of It”



Family owned and operated EDCO, which includes Escondido Disposal Inc., has been on the **Road to Zero Waste** since its founding in 1967. With a focus on diversion, EDCO has developed an extensive network of recycling processing facilities that are collectively designed to maximize recovery efforts and create sustainable solutions for our environment.

“We’ll Take Care of It” is the foundation that EDCO approaches customers, communities, fellow employees and the environment. EDCO has long been recognized as an industry leader who is committed to enhance the quality of life for the communities we serve as well as our employees.

EDCO has embraced its unique role as an independent, premier service provider that is firmly committed to innovation that reduces the impact on the environment. EDCO believes it is our responsibility to leave a sustainable planet to future generations.

EDCO's Recycling & Processing Facilities

As one of the largest recyclers in Southern California, EDCO does not own any landfills and instead has heavily invested into processing facilities.

EDCO has the largest network of local recycling processing facilities in San Diego County and one of the largest in the state. EDCO's combined permitted Southern California processing and transfer capacity is over **3,000,000** tons per year.

EDCO's Facilities:

- ♻ Two Material Recovery Facilities (MRF's)
- ♻ Two Mixed Construction Demolition and Inert (CDI) Processing Facilities
- ♻ Six Transfer Stations



EDCO's Extensive Network of Recycling & Processing Facilities and CNG Facilities



6 State Certified
Recycling Buyback Centers



6 Transfer Stations



3 CNG Public Fueling Stations



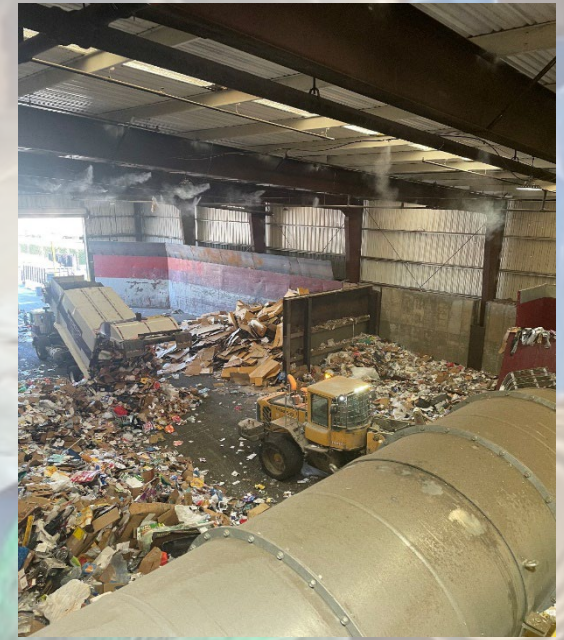
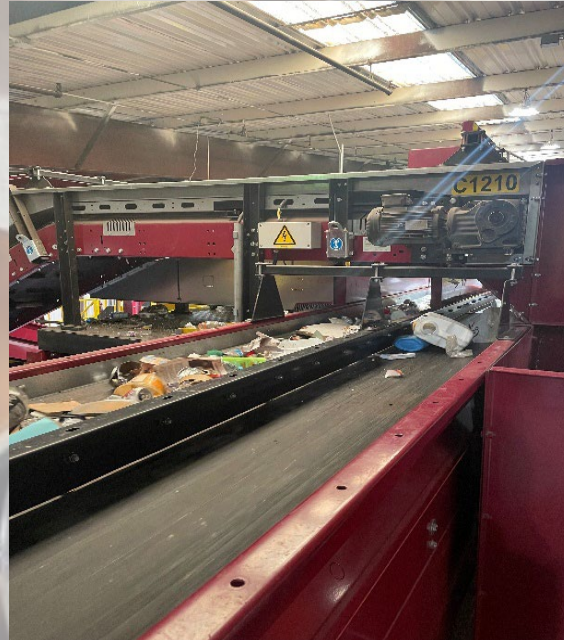
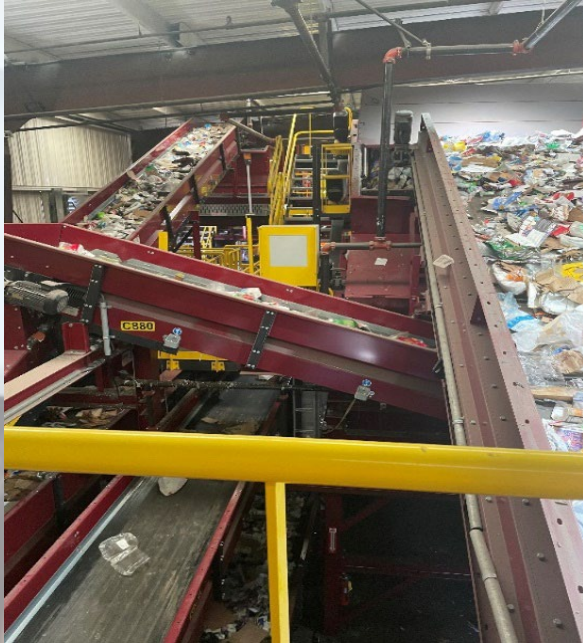
2 Material Recovery Facilities
(MRF's)



2 Mixed Construction Demolition and
Inert (CDI) Processing Facilities

EDCO Recycling

The **newest**, State-of-the-Art advanced technology recycling facility, in the United States that EDCO operates continues to lead EDCO ***“On the Road to Zero Waste.”***



7 High-speed optic scan sort systems

30 Full-time, full benefit team members assisting the mechanized sort

100,000 Pounds of recycling to be processed per hour

Material Recovery Facilities (MRF's)

EDCO's MRF's process commingled recycling using a series of screens, magnets, high-speed optic scanners, conveyors and EDCO personnel to separate mixed loads of recyclable material.

These state-of-the-art facilities allow EDCO to process mixed recycling with minimal contamination. Combined these facilities are capable of diverting over **621,000** tons of material from landfills each year.

Assisting jurisdictions throughout Southern California in achieving **Zero Waste** goals.



Escondido Resource Recovery



EDCO Recycling, Lemon Grove

Mixed Construction Demolition and Inert (CDI) Processing Facilities



SANCO Resource Recovery (SRR) , Lemon Grove

EDCO processes mixed construction loads of drywall, cardboard, lumber, metal, rock and asphalt at the company's CDI processing facilities.

Many of these materials can be reused or recycled, thus prolonging our supply of natural resources and saving valuable landfill space.

All EDCO facilities exceed the CALGreen Diversion requirements. Our overall diversion quality keeps us ***On the Road to Zero Waste.***



EDCO CDI Recycling Facility – San Marcos



Public Disposal Site and Transfer Stations

EDCO's public disposal sites and transfer stations play a huge role in reducing the overall environmental impact of waste collection and disposal.

Instead of multiple trucks going to faraway locations, these trucks go to our transfer stations. The waste is offloaded, sorted and combined into larger trucks to be sent to landfills and recycling centers, ultimately reducing the total number of vehicular trips to and from each site.



EDCO Recycling and Transfer – Signal Hill

EDCO's Facilities:

- ♻️ EDCO Station – La Mesa
- ♻️ Escondido Resource Recovery
- ♻️ Fallbrook Recycling and Transfer
- ♻️ Ramona Transfer Station
- ♻️ EDCO Recovery and Transfer– San Diego
- ♻️ EDCO Recycling and Transfer– Signal Hill



Ramona Transfer Station

EDCO Diverted Over 946,859 Tons from the Landfill in 2021



We saved over

28 million Kwh of energy
by recycling 5005 tons of PET



We saved over

962 thousand trees

by recycling 56,623 tons of paper

We saved over **695** thousand cubic yards



of space in the landfill by recycling 77,291 tons of cardboard

We recycled 33,810 tons of glass saving



2,536 tons of feldspar
6,428 tons of limestone
6,942 tons of soda ash
21,983 tons of sand

We recycled 1095 tons of aluminum



saving over
1.72
million gallons of oil

What About Organics Waste?

EDCO diverted **404,538** tons of organics waste from the landfill in 2021. Disposing of organics material in the landfill releases large amounts of methane, a potent green house gas, due to anaerobic decomposition. Recycling or composting organics reduces greenhouse gas emissions and conserves landfill space.

Organic materials, contain nutrients that can be redistributed into your soil and your plants. Similar to aluminum and other recyclables, organics waste should be disposed of properly so that the valuable resources contained in them are not lost.



EDCO Solar Facilities

As part of our environmental initiative, we constructed our fourth roof top solar facility that uses the solar system to offset the power of our natural gas compressor units, creating a more sustainable power and fuel source for collection operations. Solar power is the cleanest, most reliable form of renewable energy available today.

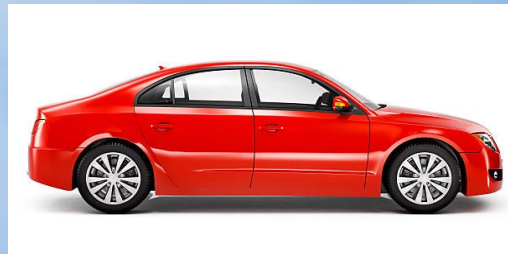
In 2021, we produced **416,380** kWh of electricity. Saving our environment in the following ways:

CO2 emissions from



35,894,459
smartphones charging

Greenhouse gas emissions from



732,452 miles driven by an
average passenger vehicle

Carbon sequestered by



4,879 tree seedlings
grown for 10 years



Escondido Resource Recovery (ERR)

EDCO completed the first fully permitted state-of-the-art, advanced technology Anaerobic Digestion (AD) Facility in San Diego County. Capable of powering our fleet of trucks with Renewable Natural Gas (RNG).

Anaerobic digestion is an efficient and environmentally sustainable technology that can make a significant contribution to the management of organic waste in California.

The site is filled daily with activity of multiple trades being coordinated by our General Contractor as well as Hitachi, the technology provider, and became operational in early 2021.

Visit edcodisposal.com to view the *EDCO Anaerobic Digestion Facility* video located under the Resource Center tab.



ERR Anaerobic Digestion Facility (AD) 2020 Timeline



January 13, 2020



February 10, 2020



March 24, 2020



April 14, 2020



May 20, 2020



June 10, 2020



July 27, 2020



August 31, 2020



September 21, 2020



October 16, 2020



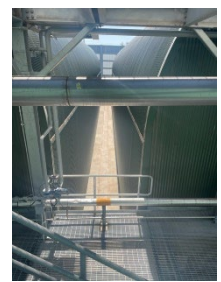
November 19, 2020



December 14, 2020



December 14, 2020



Operational 2021





EDCO Recovery and Transfer (ER&T)

In response to evolving State Mandates and the City of San Diego's Zero Waste goals, in 2018 EDCO obtained land entitlements and permits for a number of facility enhancements at ER&T.

The Master Facility Plan includes permitting EDCO's second Anaerobic Digestion (AD) Facility, the first mixed waste processing line in the region, and a roof top solar facility designed to achieve LEED Silver Certification.

This facility will increase our recycling capability, produce Renewable Natural Gas (RNG) and clean energy continuing our journey ***On the Road to Zero Waste.***





Ramona Organics Facility

Composting is nature's way of recycling. Yard waste and food waste are broken down and become food for plants.

Through composting the amount of garbage sent to the landfill is **reduced**, the organic matter is **reused** rather than dumped, and it is **recycled** into a useful soil amendment. By composting, the generation of greenhouse gases, particularly methane, is avoided.



In addition to emission reduction, compost replenishes and revitalizes exhausted farm soils by replacing trace minerals and organic material, reduces soil erosion and helps prevent storm water run off.

EDCO construction of the Ramona Organics Facility became operational in 2021. The EDCO Ramona Organics Facility plays a significant role in diverting waste from landfills thereby conserving landfill space and reducing the production of leachate and methane gas.



Our Fleet. Simply Sustainable

In an effort to reduce our impact on the environment, EDCO is committed to converting our fleet to Renewable Natural Gas (RNG) powered vehicles. EDCO currently operates Natural Gas power tractors, collection trucks, pick-up trucks, bin delivery trucks, maintenance trucks and bulky item trucks.



Why Renewable Natural Gas (RNG)

- RNG is an ultra-clean and ultra low-carbon natural gas alternative. As organic waste breaks down it emits methane gas, called biogas.
- The methane gas is captured then processed, purified, and distributed to EDCO's nine natural gas fuel stations.
- RNG provides further reduction in Greenhouse Gas effects over the use of extracted natural gas.
- RNG diverts organic waste from our landfills and turns it into a renewable form of energy.



Natural Gas (NG) Stations

As part of our commitment to the environment and a key part of the regional infrastructure needed to expand the use of NG Vehicles, EDCO operates 4 public CNG stations. In addition, EDCO operates 6 time-fill facilities that serve company vehicles.



Distribution History

2017	2,120,241
2018	2,351,323
2019	2,750,000
2020	3,149,872

In 2021, EDCO distributed **over 3.4 million** diesel gallon equivalents (DGE's) of natural gas.

Environmental Benefits:



3.4 million pounds of diesel fuel produces **69,000,000 pounds of CO2**



Natural gas equivalent produces **near zero CO2**

Time-fill



Time-fill allows a fleet to fill overnight during off-peak hours. Off-peak hours are times when the energy grid is not under a lot of stress and has excess electrical generation.

If that energy is not used, it's actually wasted.

Time-fill also increases efficiency of refueling. In addition, time-fill stations ensure that compressors only start and stop one time per day, reducing maintenance and extending the life of the equipment.

EDCO's Near Zero (NZ) Emission Collection Fleet

- Near Zero engines produce almost zero emission of Nitrous Oxide (NOx), which is the primary generator of air pollution.
- The NOx emissions are 90% less than 2010 standards, with ten NZ engines producing the NOx equivalent of just one 2010 engine.
- NZ technology meets the State of California 2023 NOx and 2031 petroleum reduction goals. The California Air Resources Board (CARB) identifies that the NZ engine emissions are equivalent to a 100% battery powered vehicle using electricity from a modern natural gas power plant.
- The result is that AD generated RNG powering a NZ unit, creates a carbon neutral or carbon negative (depending upon the specific intensity of the AD RNG) collection fleet.



Services at a Glance



“We’ll Take Care of It”

Residential

Curbside, Trash, Recycling &
Organics Waste Service
Storage Container
Christmas Tree Recycling
Temporary Bin Service
Roll-off Boxes
Bulky Item Pick up

Free Drop Off

Electronic Waste Recycling
Cooking Oil Recycling
Batteries – Residential Customers
Sharps – Residential Customers

Industrial

Storage Containers
Trash Roll-off Boxes
Recycle Roll-off Boxes
Organics Roll-off Boxes
CDI Roll-off Boxes
Compactor Services

Additional Service

Waste Assessments
Specialized Reporting
Educational Presentations

Commercial

Trash Bin Services
Recycle Bin Services
Organics Bin Services
Storage Containers
Roll-off Boxes
Bulky Item Pick up
Compactor Services

Events

Cardboard Trash
& Recycle Boxes
Commercial Trash Bins
Commercial Recycle Bins
Roll-off Boxes

Household Hazardous Waste (HHW) Partnerships

Household Hazardous Waste that is improperly managed poses a serious threat to human health and the environment. HHW is the unused or leftover portion of any hazardous chemicals or materials. Any leftover household product that is labeled with DANGER, WARNING, TOXIC, CAUTION, POISON, FLAMMABLE, CORROSIVE, or REACTIVE is considered a household hazardous waste. EDCO has developed unique environmental partnerships to ensure that HHW is handled safely.

Poway HHW Facility

Partnership with:
Regional Solid Waste Association



Escondido HHW Facility

Partnership with:
City of Escondido



Ramona HHW Facility

Partnership with:
County of San Diego



EDCO's Enviromental Center

Partnership with:
City of Signal Hill, City of Long Beach, County of Los Angeles, and Los Angeles County Sanitation District



La Mesa HHW Facility

Partnership with:
City of La Mesa



Vista HHW Facility

Partnership with:
Regional Solid Waste Association



Public Education

The key to maximizing sustainability is to maximize program participation among our customers. Public Education plays a vital role in sustaining safe and effective waste & recycling programs. EDCO offers tours as well as at site presentations to educate organizations on the importance of recycling. EDCO's Public Education efforts have been honored at numerous levels.



EDCO's Website



Elementary School Presentation



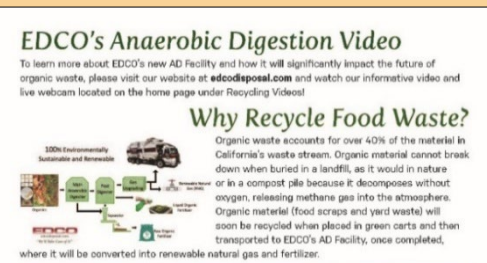
Billing Inserts and Postcards

EDCO's Award Winning Newsletters



Tour of Material Recovery Facility

EDCO's Public Education Mailers



GIVING BACK

We believe in making a difference!

EDCO actively supports the communities we serve. From litter abatement to hometown parades and local clean-ups, you're more than likely to see EDCO involved in numerous community events.



Employee Growth and Development

As a family owned and operated company EDCO is committed to offering a rewarding career to our employees. We focus on providing employees all the training and tools they need so they can grow and be successful within EDCO.

EDCO's average employee has a 15.5 year tenure, with numerous 20-year, 30-year, and several more 40-year employees.



Employee Appreciation

EDCO's success is thanks to our loyal and committed team of employees. Throughout the year we celebrate employees at the Founders Day Celebration, End of Summer BBQ, Christmas Party, and Family Day Events.

In addition EDCO provides Anniversary Recognition, Thanksgiving Turkeys and Christmas Bonuses.

20 and 40 Year Celebrations



Family Day Event



Thank You!



Founders Day Celebration



Safety First

EDCO has an extensive environmental and safety program that manages and minimizes risks associated with solid-waste and recycling collection, handling, recovery, and disposal.

All EDCO employees participate in extensive safety training and review safety and operations related topics in 12 meetings per year. Employees are financially incentivized for their safety record and are rewarded on a quarterly basis.

As evidenced by our Mission Statement, the EDCO vision remains as clear as it was in 1967.



Our mission is to efficiently serve the waste collection, disposal and recycling needs of our customers while ensuring a safe and rewarding career for our employees.

We will achieve this objective in a professional, innovative manner that consistently displays our integrity and genuine commitment to provide superior customer service.

EDCO

edcodisposal.com

"We'll Take Care of It"

*Our Mission
Our Vision*

